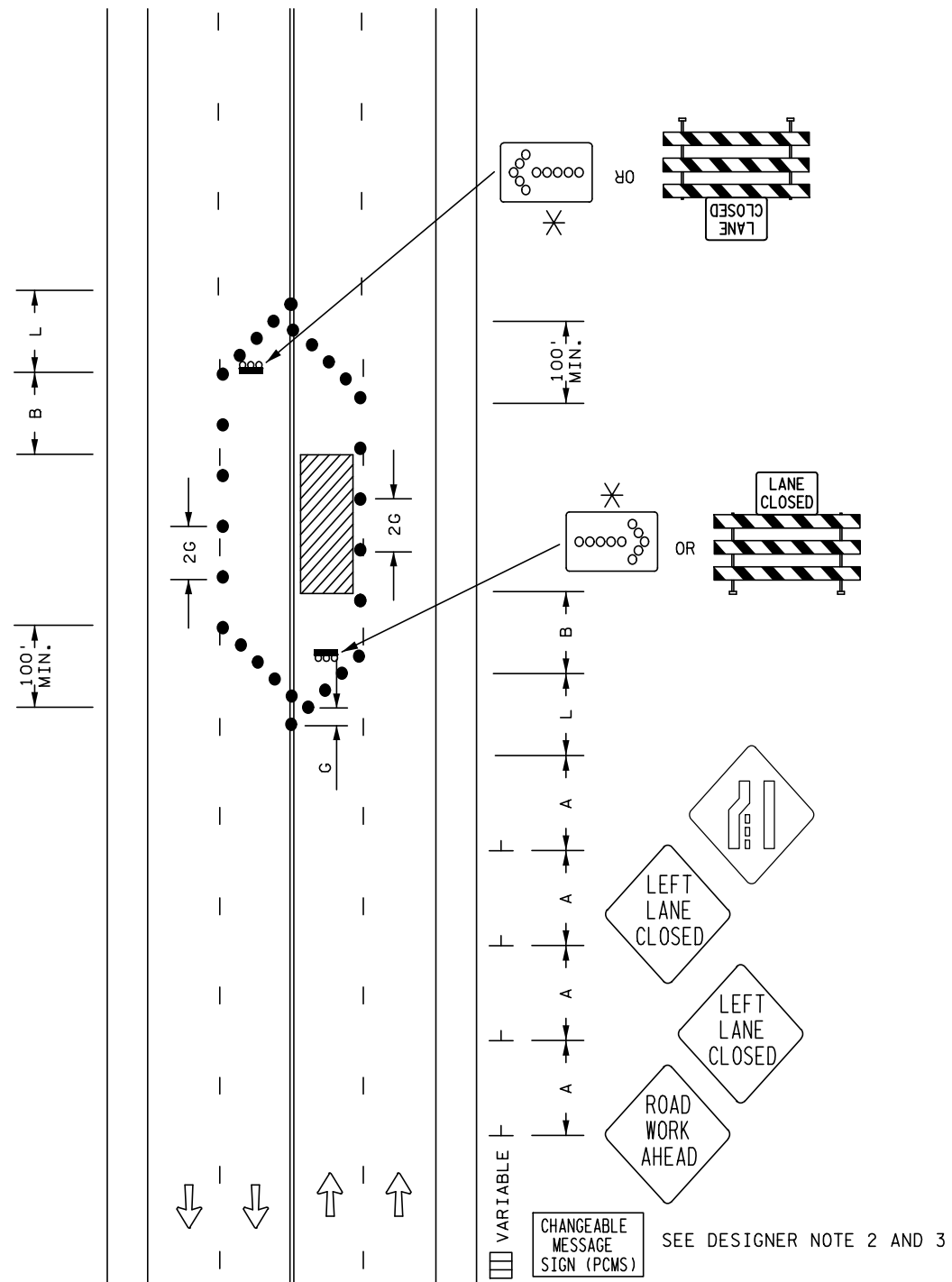


NOTES:

THE ADVANCE WARNING SIGN SEQUENCE IS SHOWN FOR ONE WAY DIRECTION ONLY, THE OTHER DIRECTION SHALL BE IDENTICAL.



LEFT LANE CLOSURE
MULTI-LANE UNDIVIDED ROAD 45 MPH AND GREATER
NOT TO BE USED FOR MORE THAN THREE CALENDAR DAYS

POSTED SPEED LIMIT PRIOR TO WORK STARTING (MPH)	SPACING OF CHANNELIZING DEVICES (G) FEET	SPACING OF ADVANCE WARNING SIGNS (A) FEET	DECISION SIGHT DISTANCE FEET	TAPER LENGTH (L) FEET	BUFFER SPACE (B) FEET
45 - 50	50	600	900	600	425
55		750	1200	700	500
60 - 65		1000	1400	800	650
70 - 75		1200	1600	900	820

DESIGNER NOTES (REMOVE FROM LAYOUTS BEFORE INSERTING IN PLAN):

1. INSERT SPACING CHART DISTANCES INTO LAYOUTS AND REMOVE CHART WHENEVER PRACTICAL.
2. CONSIDER THE INSTALLATION OF A PCMS AND/OR G20-X2 OR SPECIAL SIGN IF CONGESTION IS EXPECTED, IF ADVANCE SIGNING TO DIVERT TRAFFIC IS NEEDED, OR OTHER CONDITIONS DETERMINED BY THE ENGINEER.
3. CONSIDER THE INSTALLATION OF A PCMS AND/OR G20-X1 SIGN (MODIFIED) OR G20-X2 SIGN FOR SEVEN DAY ADVANCE WARNING OF RESTRICTION.
4. FOR ANY EXCAVATION OR DROP-OFF IN EXCESS OF 12 IN., SEE THE MINNESOTA MANUAL ON UNIFORM TRAFFIC CONTROL DEVICES SECTION 6F.85 "TEMPORARY TRAFFIC BARRIERS".
5. FOR CLOSURES GREATER THAN 1000 FT., SEE LAYOUT 70 "LANE CLOSURE EXTENSION".

● DRUMS, TYPE I OR TYPE II BARRICADE OR VERTICAL PANEL.